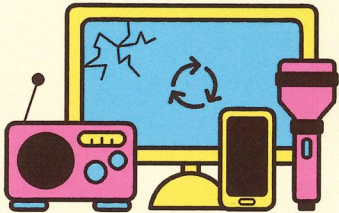


## THE RECYCLING MYTH

A common misconception that people have about recycling is that it simply means placing items in their curbside recycling bin. However, recycling is actually a system of collecting and processing used materials that still have value, in order to make something new. Just because an item has the recycling symbol on the bottom does not mean it is recyclable. If we put non-recyclable materials in our bins, we are actually contaminating the recycling stream, which negatively impacts the environment and economy.

## ELECTRONICS RECYCLING IN PENNSYLVANIA



The Covered Devices Recycling Act prohibits residents from disposing of covered devices in their trash.

Electronic waste can contain hazardous materials that are harmful to human health and the environment, it is very important that these devices are disposed of properly.

### RESOURCES FOR DISPOSAL OF ELECTRONICS:

- **LYCOMING COUNTY RESOURCE MANAGEMENT**  
800-736-7559 / Monday - Friday 7AM - 3:30PM
- **THE HAND-UP FOUNDATION**  
275 Mahoning Street, Milton  
Monday/Thursday/Friday 10AM-4PM & Saturday 9AM-1PM  
570-742-3000
- **BEST BUY**  
stores nationwide accept most electronics and large appliances, with few exceptions, with an upfront fee that is often reimbursed as a Best Buy gift card. visit: [www.bestbuy.com](http://www.bestbuy.com)
- **GOODWILL STORE**  
175 International Dr, Lewisburg, PA 17837  
Mon-Sat 9am-8pm; Sun 12pm-6pm  
(570) 867-8079

## DROP-OFF SITE INFORMATION

### The Recycling Drop-Off Center **NEW** has been enclosed!

A magnetic sticker will be required to enter the facility BEGINNING AUGUST 1, 2024. Residents of the Borough are entitled to one FREE sticker with payment of annual recycling bill. Non-Borough residents are able to purchase a sticker at the Borough Office, M- F 8AM - 4PM.

- FEES**
- Resident: FREE with payment of annual recycling bill
  - Non-Resident: \$50 annually  
\*ACH available\*

### Acceptable Recyclables

- Glass - Clear, Brown or Green (rinsed with no lids)
- Metal Cans - Aluminum & Steel
- Plastic Bottles & Jugs (No. 1 & 2 only)
- Paper - Newspaper, Office Paper, Junk Mail & Magazines
- Corrugated Cardboard & Chipboard
- White Goods - Stoves, Microwaves, Washers/Dryers, Water Heaters; purchase sticker at Borough Office  
\$20 Pick up by Borough  
\$18 Take to Drop-Off Site  
\$20 Non-Borough Resident Drop-Off

Location: 170 Race Street, east of the Railroad Overpass, behind the DPW Garage.

Hours: Monday, Tuesday, Thursday, Saturday  
7:30AM - 2:30PM

For more information and a list of locations that accept a variety of other recyclable materials, visit: [earth911.com](http://earth911.com)

## WHAT CAN NOT BE RECYCLED

- Straws
- Food Containers (ex. yogurt or butter)
- Takeout Containers
- Food Wrappers
- Styrofoam
- Napkins and Paper Towels
- Plastic wrap
- Paper or plastic cups, dishes and utensils
- Window Glass
- VC Plastics
- Hazardous Waste (paint, pesticide & aerosol containers, batteries, pool chemicals, etc)

## WHAT CAN BE RECYCLED CURBSIDE

\*All items must be separated & placed curbside by 7AM

- Clear & Brown Glass (rinsed with no lids)
- Tin & Bi-metal Cans (rinsed)
- Aluminum Cans (rinsed)
- Magazines (tied in bundle or in bucket)
- Newspapers (tied in bundle or in bucket)

